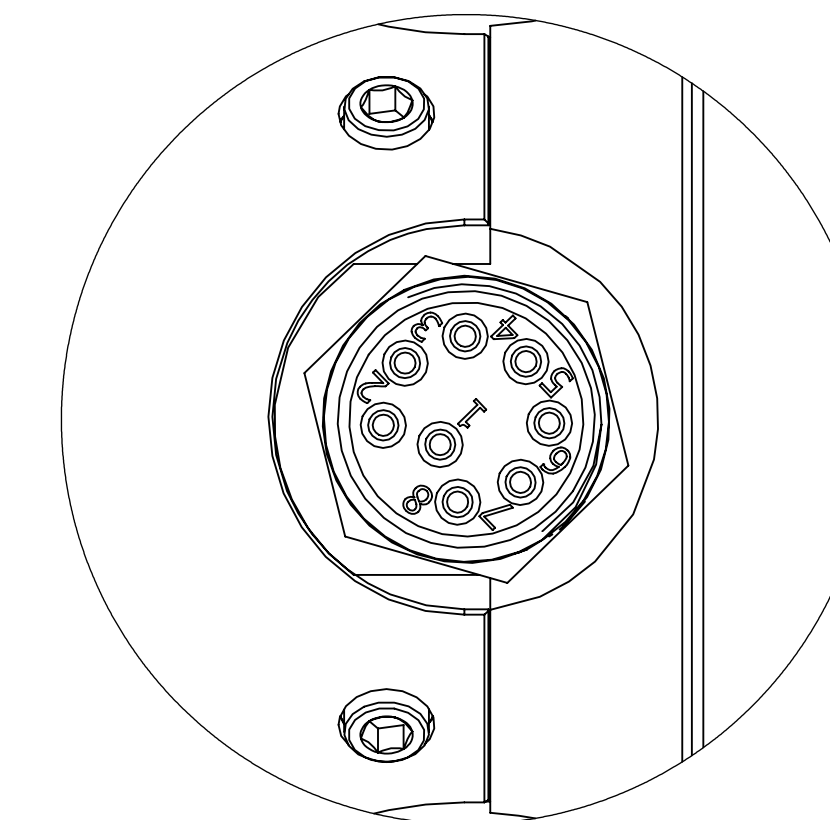
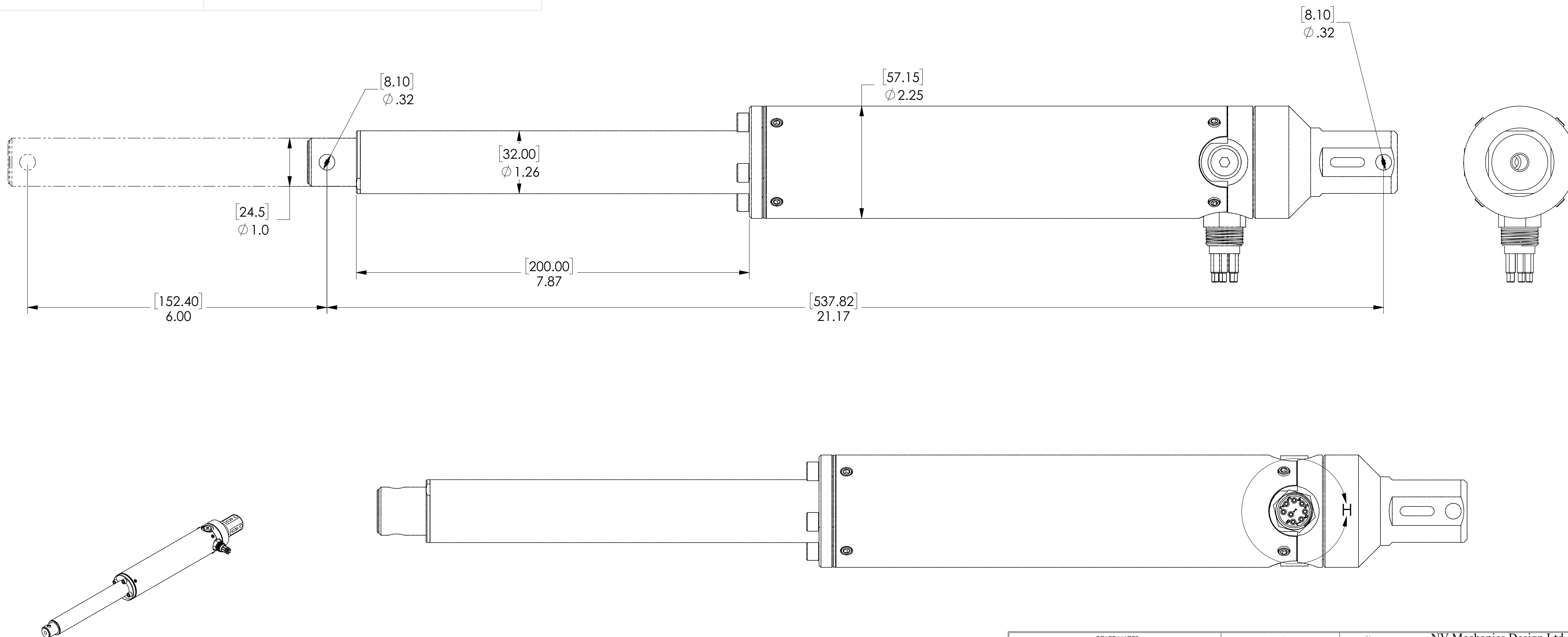



LINEAR ACTUATOR	
MOTOR TYPE	BRUSHLESS MOTOR
NOMINAL VOLTAGE	24VDC
MAX CONTINUOUS PUSH PULL FORCE	1000 N (220 lbf)
MAXIMUM INTERMITTENT PUSH PULL FORCE	1300 N (300 lbf)
NOMINAL CURRENT	2.1 A
MAX CONTINUOUS CURRENT	3.5 A
SPEED with 5 mm screw pitch and 1000 N	5 mm/sec
SPEED with 35 mm screw pitch and 500 N	45 mm/sec
DIAMETER	2.25" OD (58 mm)
STROKE	6.0" (150mm)
CONNECTOR	MCBH8M INSTALLED WHIP 12" MCIL8F PROVIDED
OIL FILLED (PRESSURE COMPENSATED)	OIL TELLUS S22 OR EQUIVALENT
DEPTH RATING	3000 msw
DRIVER INCLUDED IN THE HOUSING	RS422, RS485 AND RS232 CONTROL
ABSOLUTE ENCODER	14 BIT ROTATION, 16 BIT POSITION
SOFTWARE	PROVIDED, NO NEED FOR "ZERO POSITION", LIMIT SWITCHES

Actuator Connector Pin Number	RS485 (FROM ACTUATOR)
1	(+) 24VDC
2	(-) 24VDC
3	TX+
4	TX-
5	RX+
6	RX-
7	DI OUT
8	DI OUT



DETAIL H
SCALE 2 : 1



TOLERANCES unless otherwise noted				APPROVAL		 237 E Balmoral Rd. North Vancouver, BC, V7N 1R4 e-mail: sales@mechanicsdesign.com Phone: 604-250-3375 Fax 604-525-5570
ANGLES ±0.3°	DECIMALS .XX ±.1	DECIMALS .XXX ±.050	DECIMALS .XXXX ±.005	DRF / DATE IAU FEB 28 2020	CHK / DATE PPR MAR 1, 2020	
Unless otherwise noted, all dimensions are in inches. DO NOT SCALE. Work to dimensions shown.				150mm STROKE, INTERNAL COMP 3,000m DEPTH RATING		
INTERPRET PER ANSI Y14.3 AND ANSI Y14.5M		DWG FILE NAME UMC20-ME-60000-0.SLDDRW		This document contains confidential information. All rights are owned by NV Mechanics Design Ltd. No use or disclosure is to be made without the written permission of NV Mechanics Design Ltd.		
SIZE D	WBS	DWG. NO. UMC20-ME-60000-0		SCALE	WEIGHT 3.68 LBS	
SHEET 1		OF 1				

REVISIONS				
ZONE	REV.	DESCRIPTION	DATE	APPROVED